
DESCRIPTION OF FUNCTIONS

STARTING THE SOFTWARE	2
STARTING THE SOFTWARE	2
SCREEN CAPTURE	5
WRITING SYMBOLS AND LETTERS ON A SCREEN	5
DELETING SYMBOLS AND LETTERS ON A SCREEN	5
CAPTURING AND SAVING A SCREEN	6
EDITING THE SAVED FILE WITH PAINT BRUSH ...	7
CHANGING THE PEN COLOR	7
OPENING THE FOLDER IN WHICH THE CAPTURED FILES ARE SAVED	8

STARTING THE SOFTWARE

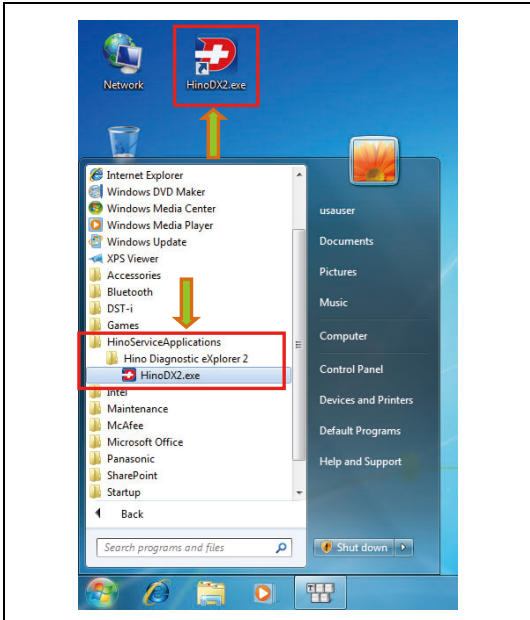
STARTING THE SOFTWARE

EN01N80ZZZ050102001001

1. **DOUBLE-CLICK THE SHORT CUT ICON FOR THE TROUBLE-SHOOTING SOFTWARE.**
(Windows desktop)

HINT

Or, from the Windows' Start Menu, select [All Programs] - [HinoServiceApplications] - [Hino Diagnostic eXplorer 2].

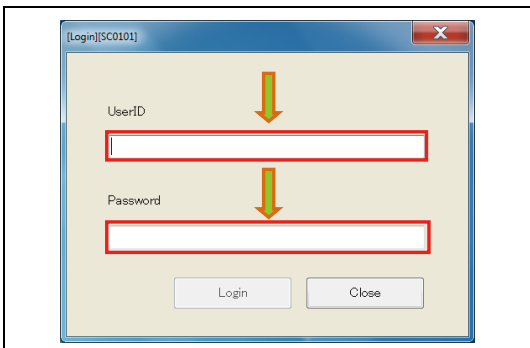


SHTS80ZZZ0500001

2. **ENTER YOUR USER ID AND PASSWORD.**
(Login screen)

HINT

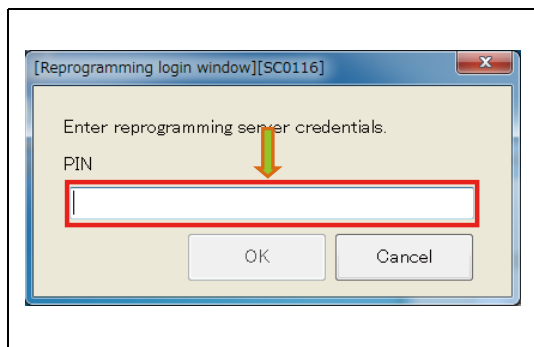
When you log in for the first time (after clean installation), connection to the Internet is required.



SHTS80ZZZ0500002

CONNECTION TO THE INTERNET AT FIRST LOGIN

- For security enhancement, activation (personal authentication) is performed through the Internet. Activation needs to be performed to prevent the use of stolen devices. You must connect to the Internet at the first login.

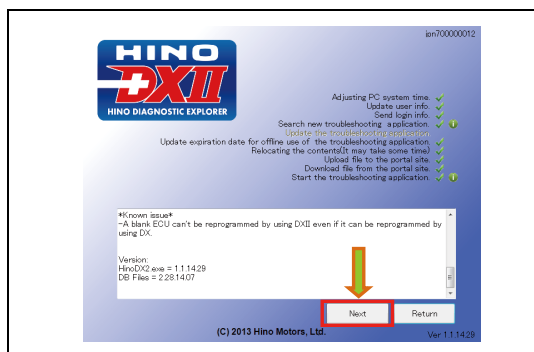


SHTS80ZZ0500003

3. ENTER THE SPECIFIED PIN CODE. (Reprogramming server login screen)

HINT

- This screen appears when you are authorized to perform reprogramming and no PIN code is specified.
- For the PIN code, contact the system administrator.

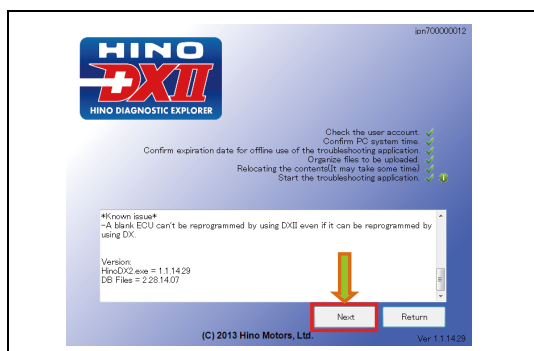


SHTS80ZZ0500004

4. CONFIRM THE INFORMATION DISPLAYED AND PRESS THE [Next] BUTTON. (Splash screen) [When connected to the network]

HINT

Pressing the [Return] button returns to the login screen.



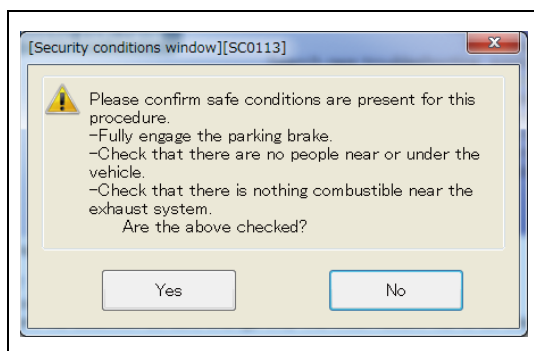
SHTS80ZZ0500005

5. CONFIRM THE INFORMATION DISPLAYED AND PRESS THE [Next] BUTTON. (Splash screen) [When not connected to the network]

HINT

Pressing the [Return] button returns to the login screen.

When you log in for the first time, connection to the network is required.

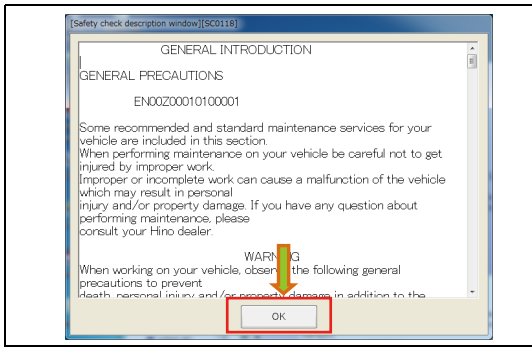


SHTS80ZZ0500006

6. PERFORM SAFETY CHECK AND PRESS THE [Yes] OR [No] BUTTON. (Security conditions window)

HINT

When [No] is pressed, the "Safety instruction screen" appears.

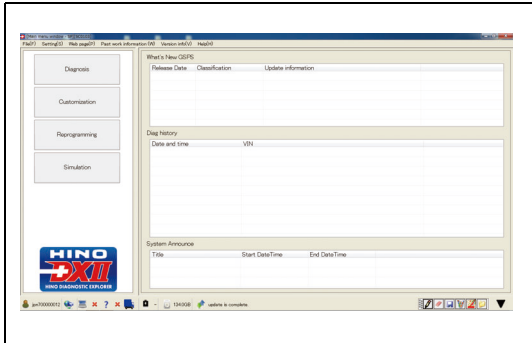


SHTS80ZZ0500007

7. READ ALL THE SAFETY INSTRUCTIONS AND PRESS THE [OK] BUTTON.
(Safety check description window)

HINT

This appears when [No] is pressed on the safety check description window.
The [OK] button will not be highlighted until all the safety general introduction have been read.



SHTS80ZZ0500008

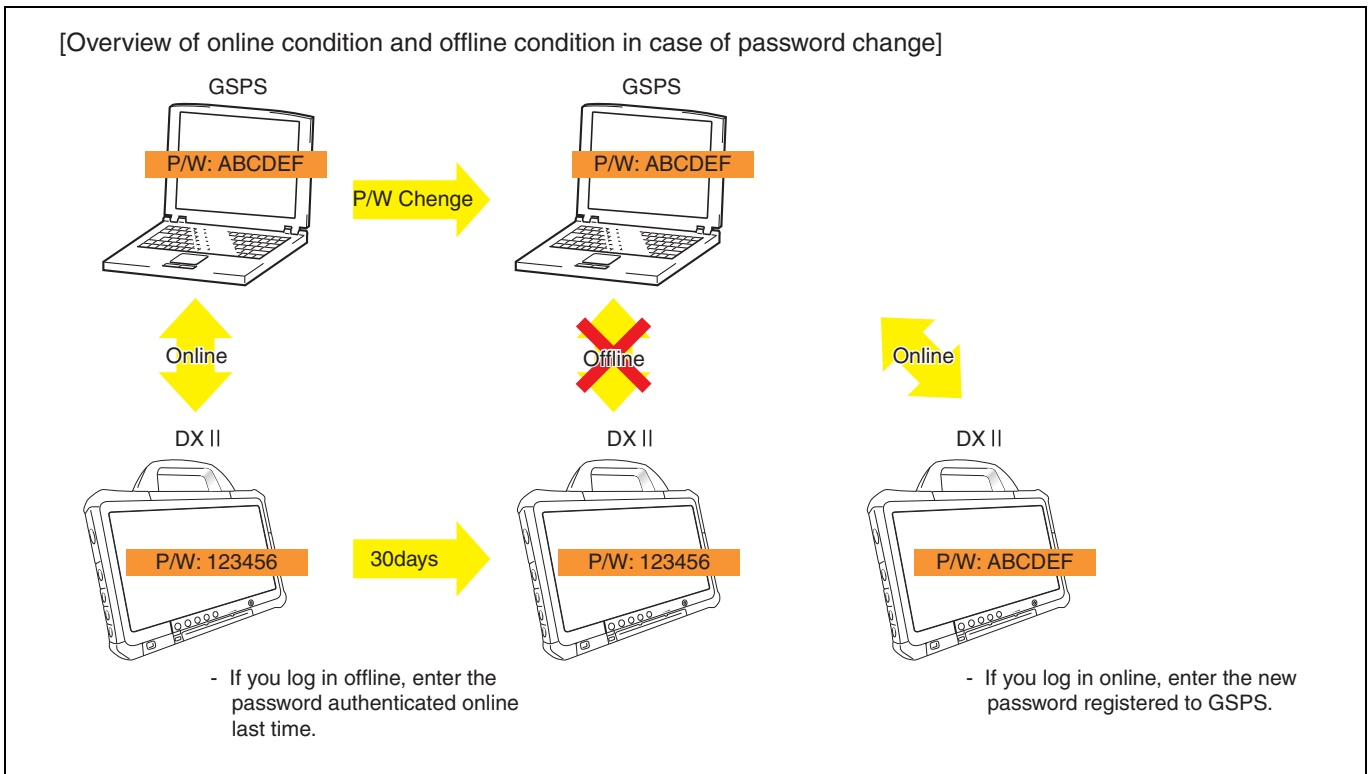
8. THE MAIN SCREEN OF THE HINO DX II IS DISPLAYED.
(Main screen)

HINT

When an error occurs during log-in, refer to "What to do if you have a problem."

ABOUT HINO GSPS PASSWORD CHANGE AND VALIDITY PERIOD

- HINO DX II shares the user ID and password with HINO GSPS.
- Note that the password of HINO DX II online becomes different from that of HINO DX II offline if the password of HINO GSPS is changed.



SCREEN CAPTURE

WRITING SYMBOLS AND LETTERS ON A SCREEN

EN01N80ZZ050102002001

1. ENTER EDIT MODE. (Any screen)

- (1) Press the [Pen] icon on the screen capture bar.



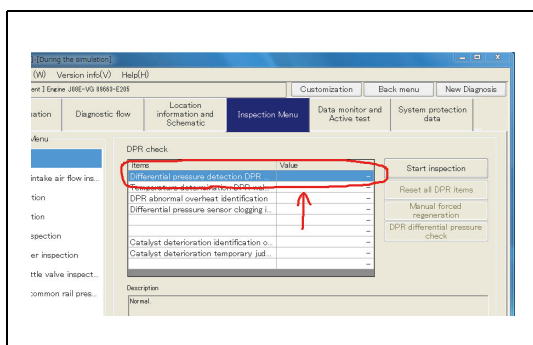
SHTS80ZZ0500010

2. WRITE SYMBOLS AND LETTERS ON A SCREEN.

- (1) Use the mouse to write symbols and letters.

HINT

To change the pen color, refer to "CHANGING THE PEN COLOR."



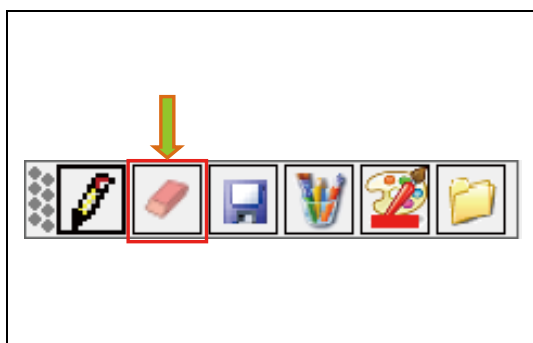
SHTS80ZZ0500011

DELETING SYMBOLS AND LETTERS ON A SCREEN

EN01N80ZZ050102002002

1. ENTER DELETE MODE. (Any screen)

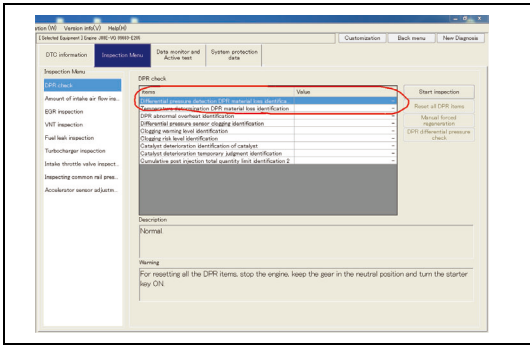
- (1) Press the [Eraser] icon on the screen capture bar.



SHTS80ZZ0500012

2. DELETE THE ARBITRARY SYMBOLS AND LETTERS ON THE SCREEN.

- (1) Use the mouse to delete arbitrary symbols and letters.



SHTS80ZZZ0500013

CAPTURING AND SAVING A SCREEN

EN01N80ZZZ050102002003

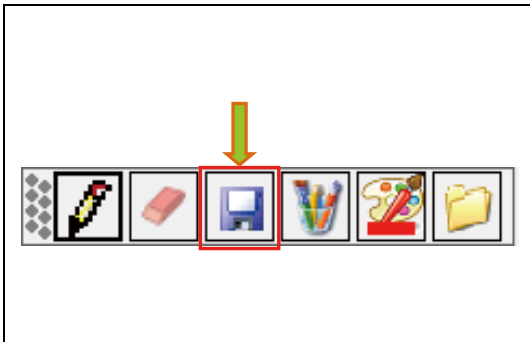
1. CAPTURING AND SAVING A SCREEN

(Any screen)

- (1) Press the [Floppy] icon on the screen capture bar.

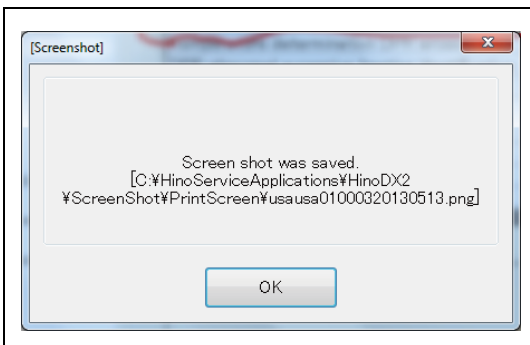
HINT

You can press this icon even while writing symbols and letters.
In this case, the screen is captured and saved with the written symbols and letters.



SHTS80ZZZ0500014

2. When the screen is successfully saved, the message will appear.



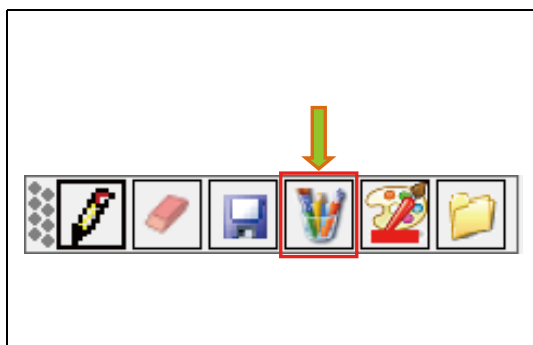
SHTS80ZZZ0500015

EDITING THE SAVED FILE WITH PAINT BRUSH

EN01N80ZZZ050102002004

1. EDIT THE LAST SAVED FILE WITH PAINT BRUSH. (Any screen)

- (1) Press the [Paint brush] icon on the screen capture bar.

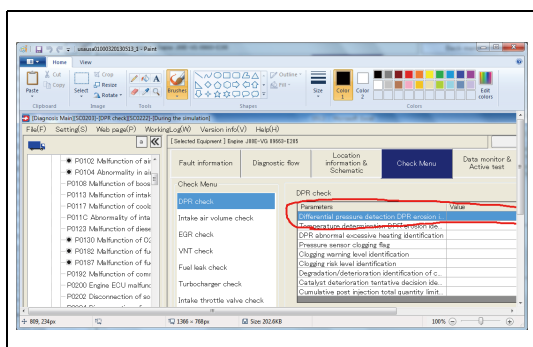


SHTS80ZZZ0500016

2. THE LAST SAVED FILE IS LOADED AND THE PAINT BRUSH OPENS.

HINT

The last captured file automatically opens.



SHTS80ZZZ0500017

CHANGING THE PEN COLOR

EN01N80ZZZ050102002005

1. CHANGE THE PEN COLOR. (Any screen)

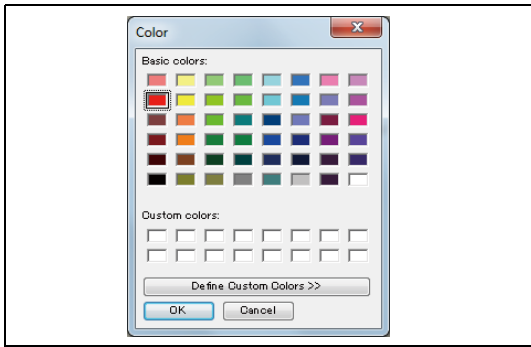
- (1) Press the [Pallet] icon on the screen capture bar.

HINT

You can press the [Pallet] icon while writing symbols and letters.



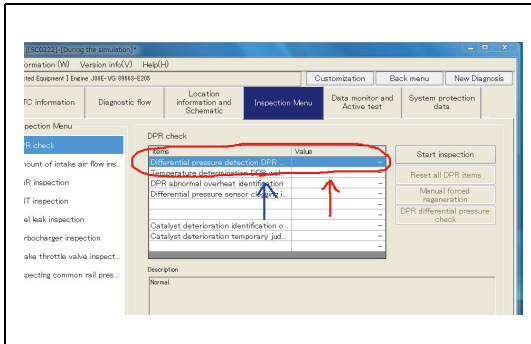
SHTS80ZZZ0500018



SHTS80ZZ0500019

2. CHANGE THE PEN COLOR. (Color setting dialog)

- (1) Select the color and press the [OK] button.



SHTS80ZZ0500020

OPENING THE FOLDER IN WHICH THE CAPTURED FILES ARE SAVED

EN01N80ZZ050102002006

1. OPEN THE FOLDER IN WHICH THE CAPTURED FILES ARE SAVED.

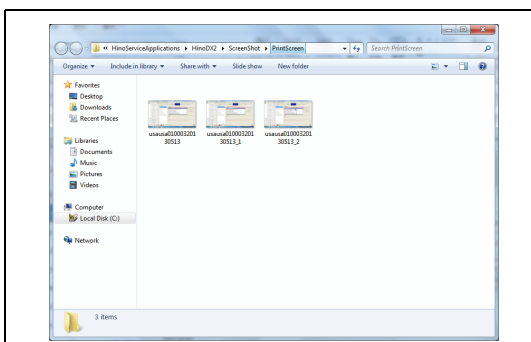
(Any screen)

- (1) Press the [Folder] icon on the screen capture bar.



SHTS80ZZ0500021

2. SELECT THE FILE. (Explorer)



SHTS80ZZ0500022